



Catering Consultants to:

- Visitor Attractions
- Conference Venues
- Hospitality Operations
- Workplace Catering

Newsletter 2021

THE 'NEW WORLD' CHALLENGES

Hospitality opened this summer only to find a tsunami of further challenges from supply chain to staffing which is now acute. We have been assisting clients adapting to this new world with the uncertainty of further restrictions coming this winter.

We continue to be commissioned to assist clients in finding the right partner through an open tender process

The post Covid-19 contract terms are different and involve less risk for the caterer. The challenge is to enable the client to have the upside with good sales. We have managed, or are in the process of managing, catering tenders at FCA, Crown Estate, Newbury Racecourse, Lincoln Cathedral, Painters Hall and Farmers & Fletchers livery companies.



Post Covid 19 and Cop-26

Post Covid-19 and the Cop-26 summit the focus continues to be on sustainability and we are supporting our clients in developing their plans. These include food sourcing from regenerative farming, reducing waste, sustainable equipment choices and how to help communicate the messages in the food outlets.

Unprecedented Demand



Woburn Sculpture Gallery

We have been called in by a number of estates - Whatton House, Highgrove, Sandringham, Scone Palace, Holkham, Woburn, Wells House Ireland and Beaulieu - as they seek to reorganise

and plan new catering facilities. This summer has seen unprecedented demand and with the VAT reduction some profit claw back has been achieved.

For our 2021 newsletter we have a number of client case studies which demonstrate our ability to continue to advise, support and add value;

Tintern Station

We were commissioned by Monmouthshire Council to support the transfer from an outsourced operator and re-open the café as an in-house operation; this summer provided an excellent trading platform for the café.



Tintern Cafe

Newbury Racecourse

The racecourse decided that after 12 years of in-house management they wished to outsource the catering, we ran the tender during lockdown and Compass - Levy UK won the contract.



The Charterhouse London

who operate an almshouse, a safe home and supportive community and an extensive events venue. We supported Charterhouse with their new hospitality strategic plan and subsequently assisted them with their in-house kitchen re-organisation.



Charterhouse





Bath Preservation Trust

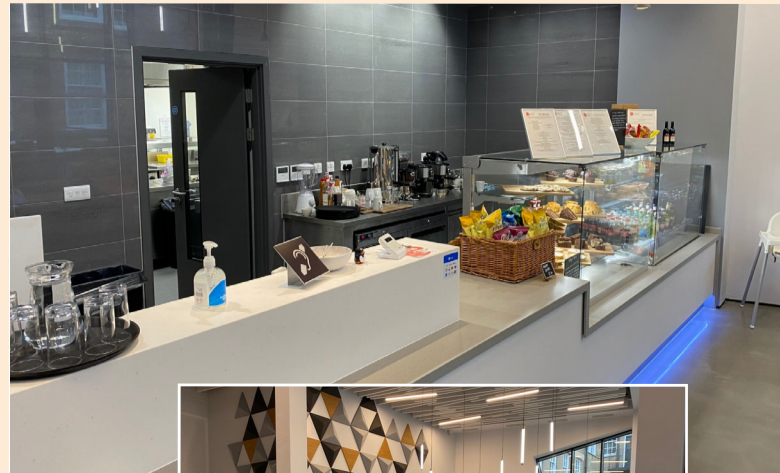
Arts and Visitor attractions

We have supported The Royal Albert Hall, Pitlochry Theatre, Bath Preservation Trust, Braintree Museum, Gallery Library and Museum Kettering and Charterhouse in developing their future strategic plan and future developments.



Royal Albert Hall

We advised the new Northampton Museum and Art Gallery on their business plan in 2017 and developed the café design in 2018. The museum has finally opened successfully after Covid-19 delays



Northampton Museum and Art Gallery



Catering Workshops

We continue conducting Catering Workshops with the Farm Retail Association and have worked on reviews for Whites Nurseries in Northampton, Bluebell Dairy in Derby and Pennywell Farm in Devon.

Our Award Winning GREAT CAFES

<http://greatcafes.blogspot.co.uk>

continues its mission to cover what's new and interesting in the café sector with examples of original ideas seen in a pre-Covid research trip to cafe capitals of the world, Australia and New Zealand'.

Our volunteering efforts include Charles as Trustee for the Hope Centre a poverty charity in Northampton, Chris carrying out virtual Youth Offending Team referral panels and Ian supporting the informal local volunteer group in Braintree helping the elderly and vulnerable.



Charles helping at the Hope Food Club

Expert, pertinent, and honest advice is our stock in trade and between the three of us we have over 40 years of consultancy experience.

We look forward to working with you in 2022

Charles, Ian & Chris

Turpin Smale Consultants

charles.manners@turpinsmale.co.uk

www.turpinsmale.co.uk

Tel: 07836 550356